

# The Sandhill

2,394 Square Feet  
 3 Bedrooms • 2.5 Baths • 2 Car Garage



Craftsman with Optional 5th Bedroom & Optional Stone



Coastal



Craftsman with Optional 5th Bedroom



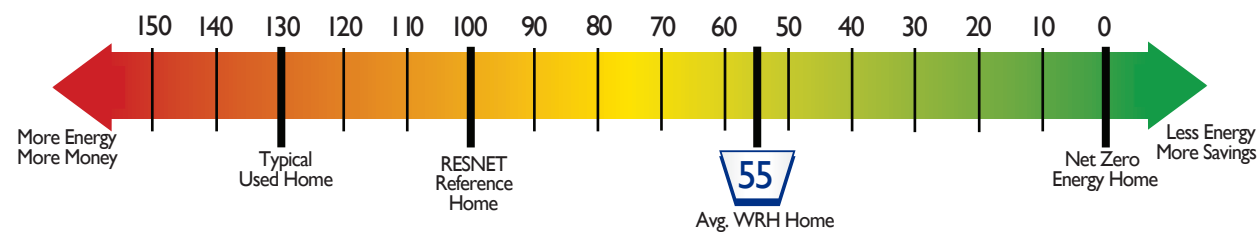
Coastal with Optional 5th Bedroom



Craftsman



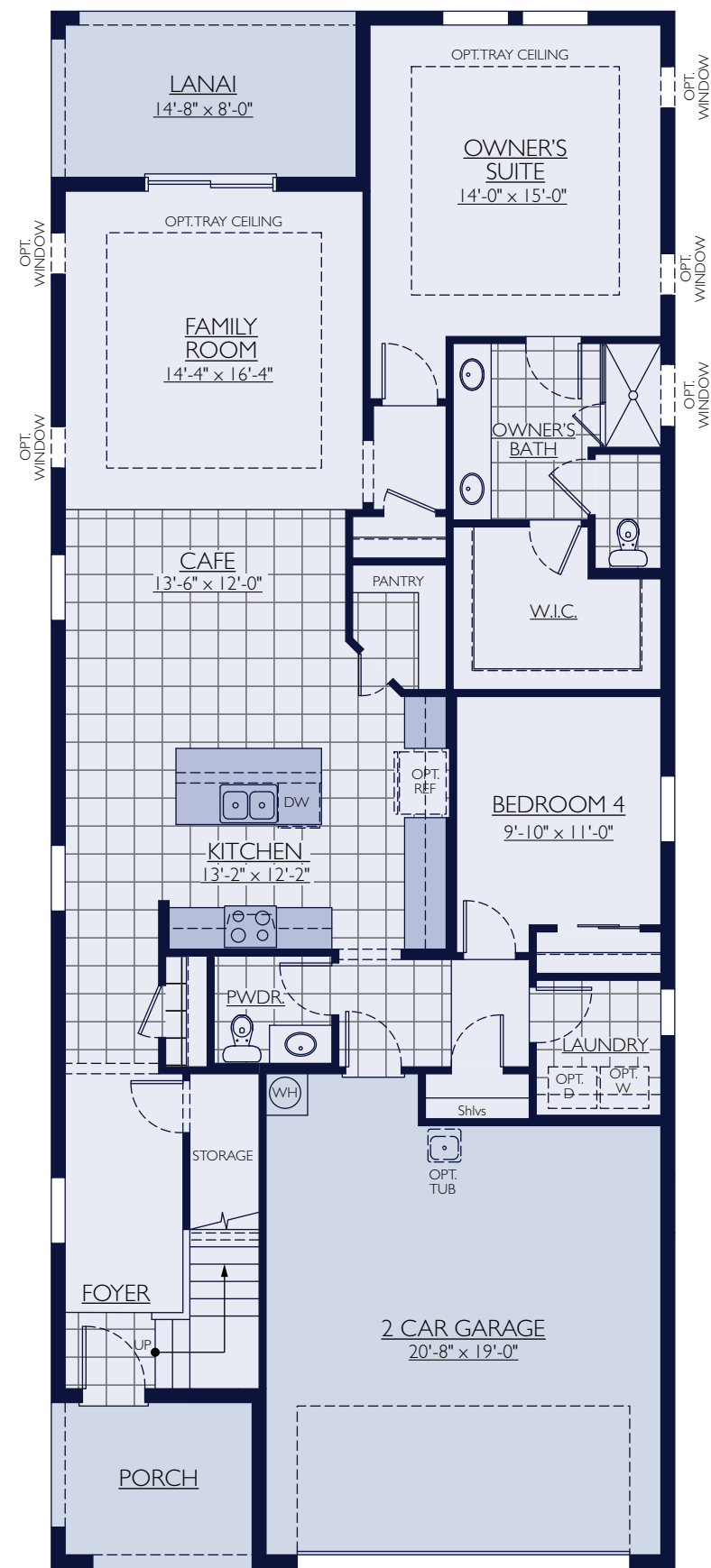
Craftsman with Optional Stone



At William Ryan Homes, our new homes are built with state-of-the-art, energy-saving building systems. The HERS Index is a scoring system established by the residential Energy Services Network (RESNET). The lower the HERS Index, the more efficient the home, which means you save more energy and money. With an average HERS Index rating of 55, our new homes are over 30% more energy efficient than a standard new home.

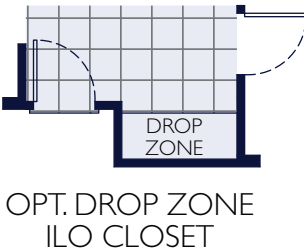
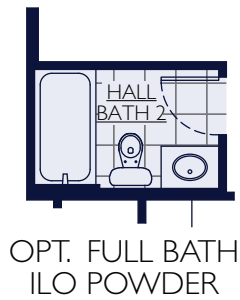
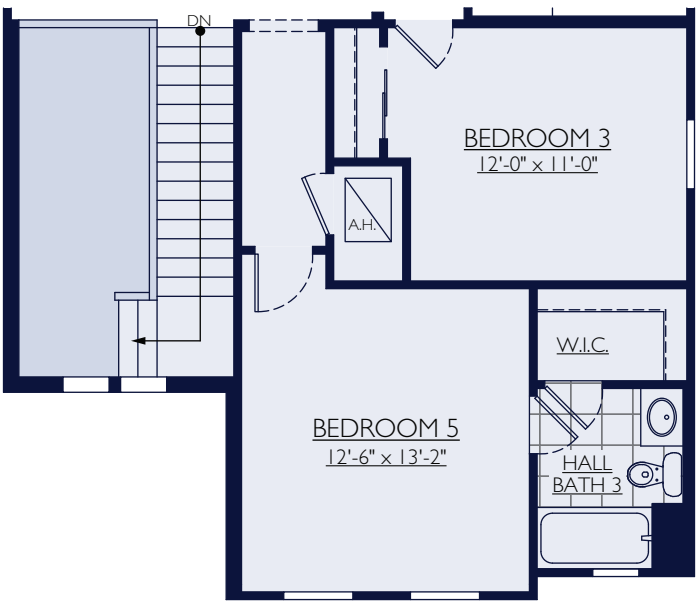
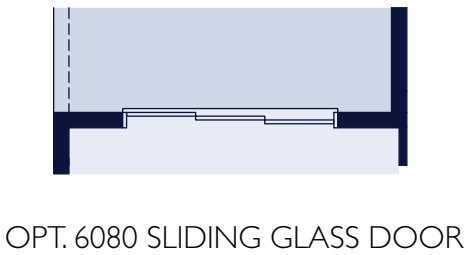
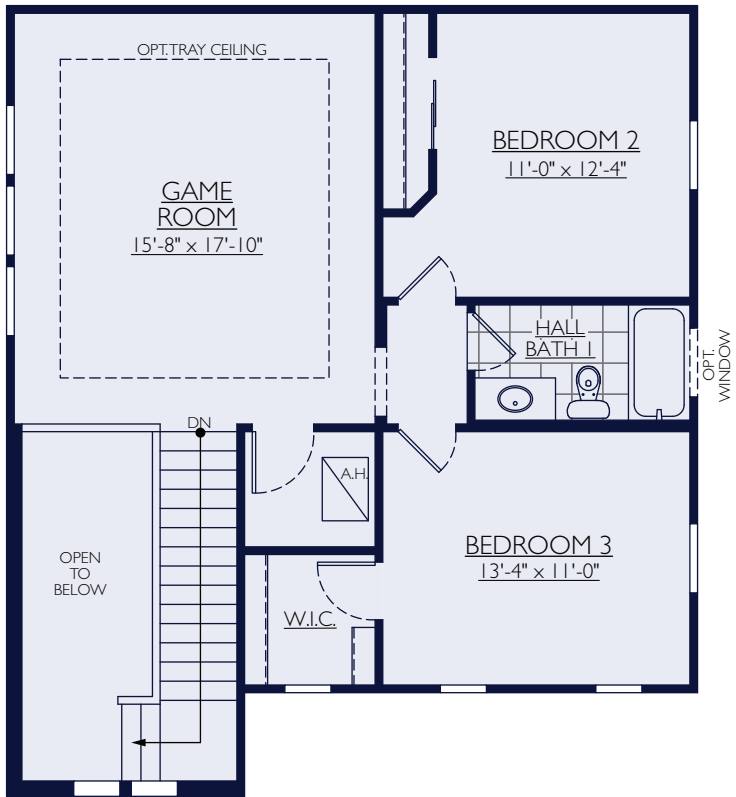


# The Sandhill - First Floor



# Second Floor & Options

For more ways to personalize your home, visit [www.WilliamRyanHomes.com](http://www.WilliamRyanHomes.com)



OPT. BEDROOM 5 w/ HALL BATH 3

Dimensions are approximate, may differ from actual plans and are subject to change without notice. Floor plans vary per elevation and community. Images may not be shown to scale. Windows, doors and ceilings may vary on options and alternate elevations selected. Specifications, equipment, plans and pricing are subject to change without notice. Renderings (elevations and landscaping) are artist's conception only. Some optional features may or may not be shown. Optional items indicated are available at additional cost. This brochure is for illustrative purposes only and not part of a legal contract. Speak with a William Ryan Homes Sales Consultant for complete information. Copyright © 2021 William Ryan Homes, Inc. All Rights Reserved. 2023.05.10

