

CYPRESS

Creekside  Run

4 beds • 3 baths • 3-car garage • 2,205 sf a/c



CHRISTOPHER
ALAN HOMES
DREAMS WITHIN REACH

CYPRESS

WITH OPTIONAL STONE

Creekside Run

4 beds • 3 baths • 3-car garage • 2,205 sf a/c



ELEVATION D WITH STONE



ELEVATION E WITH STONE



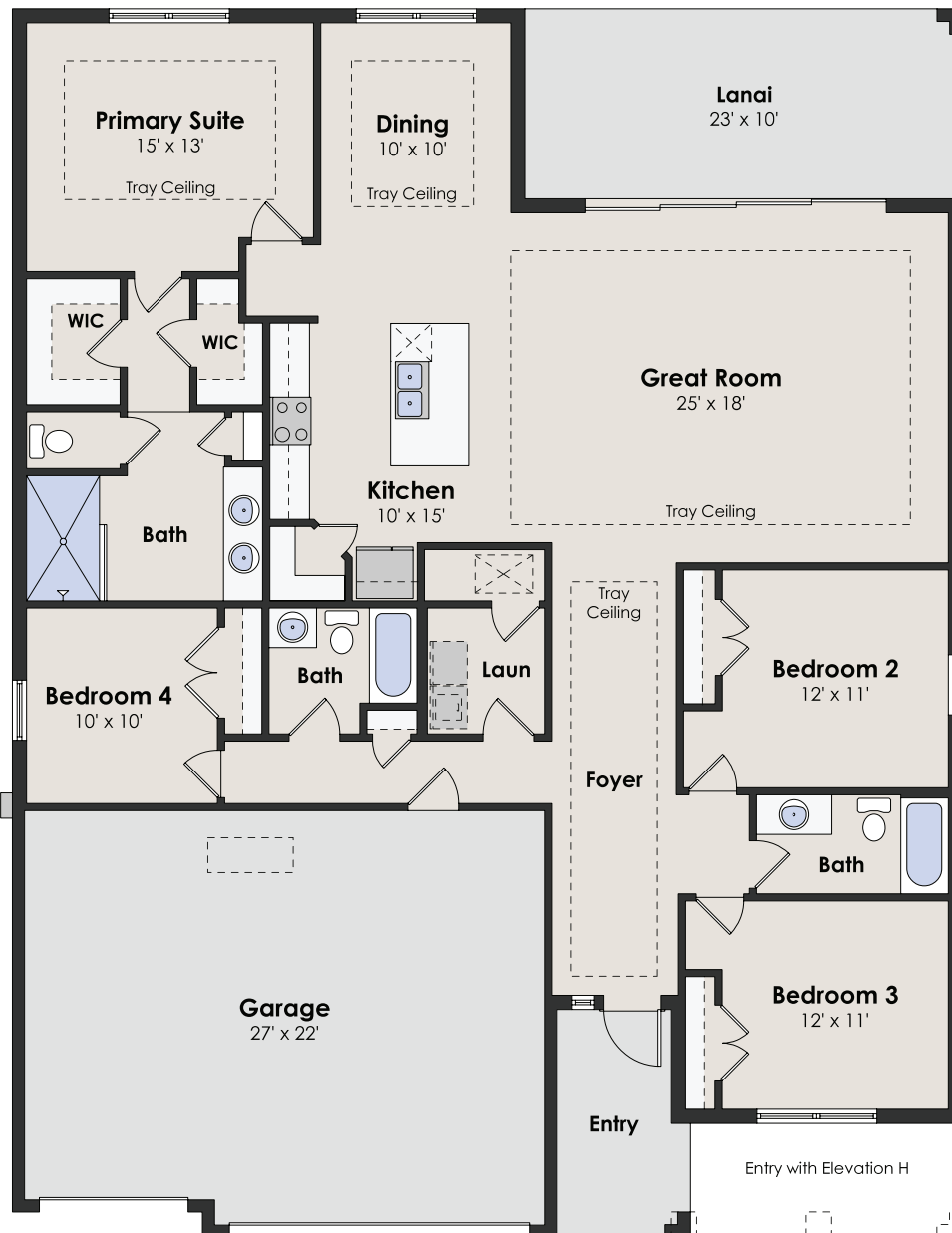
CHRISTOPHER
ALAN HOMES
DREAMS WITHIN REACH

CYPRESS

SQUARE FOOTAGE

living a/c	2,205
lanai	230
garage	621
entry	78
total	3,134

4 beds • 3 baths • 3-car garage • 2,205 sf a/c



Creekside Run

855.44.MYCAH
ChristopherAlanHomes.com

CHRISTOPHER
ALAN HOMES

Features, amenities, equipment, materials, floor plans, elevations, colors, and designs vary and are subject to changes or substitution without notice. Items shown are artist's renderings and may contain options that are not standard on all models or not included in the purchase price. Availability and pricing may vary and are subject to change without notice. Square footage/acreage/dimensions are estimated; actual square footage/acreage/dimensions may differ. Garage/bay sizes may vary from home to home and may not accommodate all vehicles. Purchasers should refer to the applicable purchase and sale agreement for final terms and conditions. © Christopher Alan Homes #CGC1532837. Christopher Alan Realty LLC #CQ1055390. 06/23.

