

# GASPARILLA

Creekside  Run

4 beds • 2 baths • 2-car garage • 1,810 sf a/c



CHRISTOPHER  
ALAN HOMES  
DREAMS WITHIN REACH

# GASPARILLA

WITH OPTIONAL STONE

Creekside  Run

4 beds • 2 baths • 2-car garage • 1,810 sf a/c



ELEVATION D WITH STONE



ELEVATION H WITH STONE



ELEVATION S WITH STONE



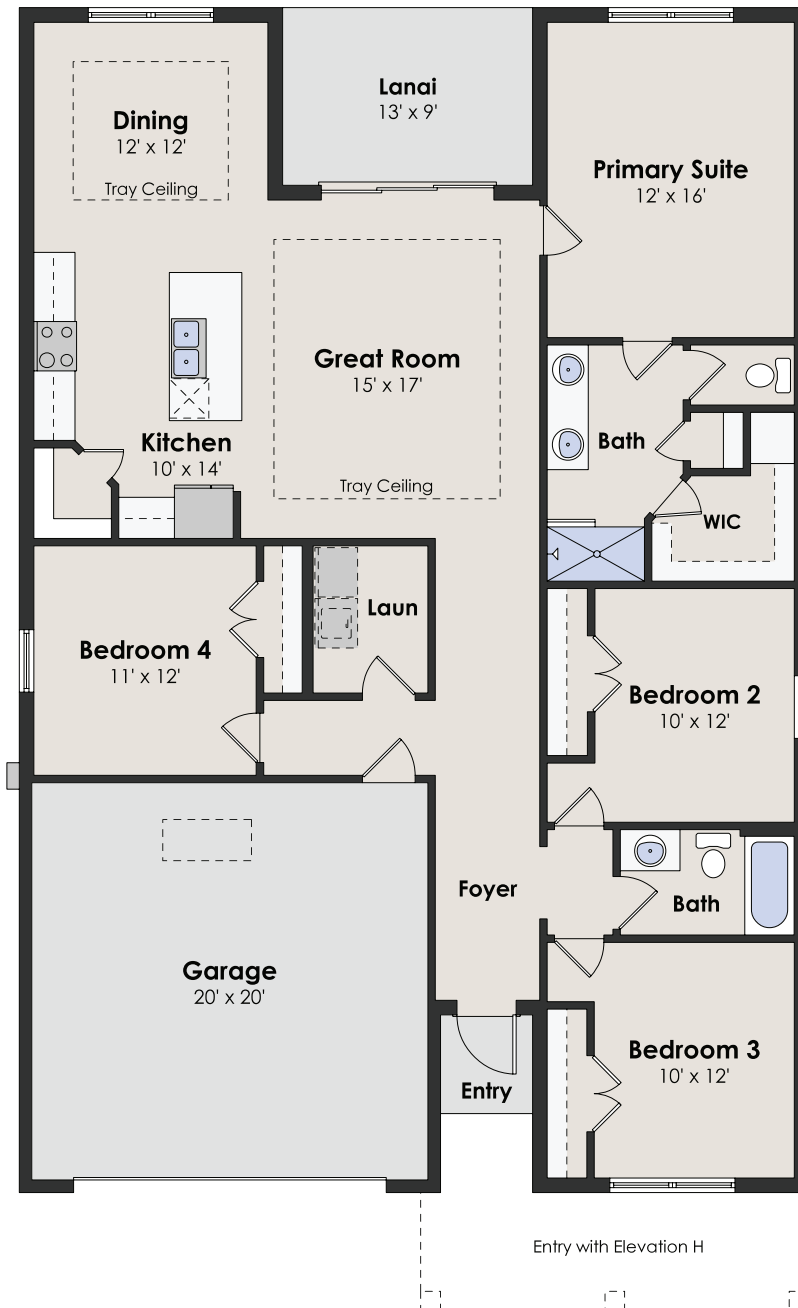
CHRISTOPHER  
ALAN HOMES  
DREAMS WITHIN REACH

# GASPARILLA

## SQUARE FOOTAGE

living a/c	1,810
lanai	114
garage	434
entry	23
<b>total</b>	<b>2,381</b>

4 beds • 2 baths • 2-car garage • 1,810 sf a/c



Creekside Run

855.44.MYCAH  
ChristopherAlanHomes.com

CHRISTOPHER ALAN HOMES

Features, amenities, equipment, materials, floor plans, elevations, colors, and designs vary and are subject to changes or substitution without notice. Items shown are artist's renderings and may contain options that are not standard on all models or not included in the purchase price. Availability and pricing may vary and are subject to change without notice. Square footage/acreage/dimensions are estimated; actual square footage/acreage/dimensions may differ. Garage/bay sizes may vary from home to home and may not accommodate all vehicles. Purchasers should refer to the applicable purchase and sale agreement for final terms and conditions. © Christopher Alan Homes #CGC1532837. Christopher Alan Realty LLC #CQ1055390. 06/23.

