

# HAMPTON

Creekside  Run

5 beds + loft • 3 baths • 2-car garage • 2,402 sf a/c



CHRISTOPHER  
ALAN HOMES  
DREAMS WITHIN REACH



# HAMPTON

WITH OPTIONAL STONE

# Creekside Run

5 beds + loft • 3 baths • 2-car garage • 2,402 sf a/c



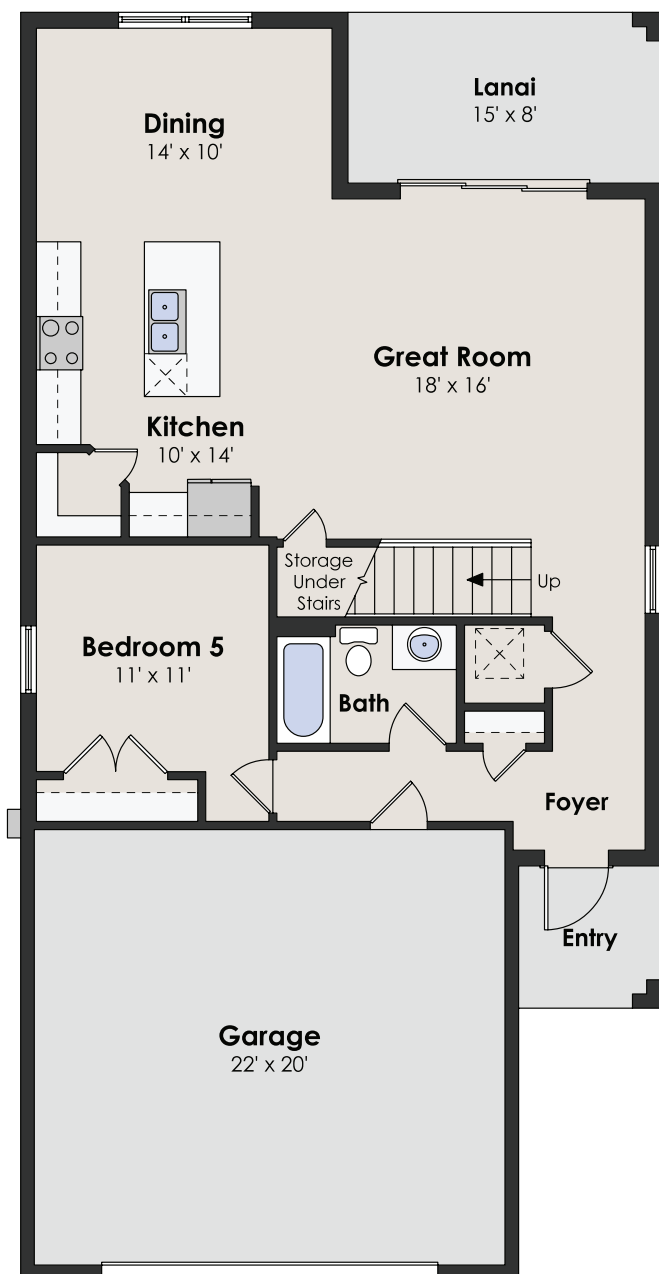
CHRISTOPHER  
ALAN HOMES  
DREAMS WITHIN REACH

# HAMPTON

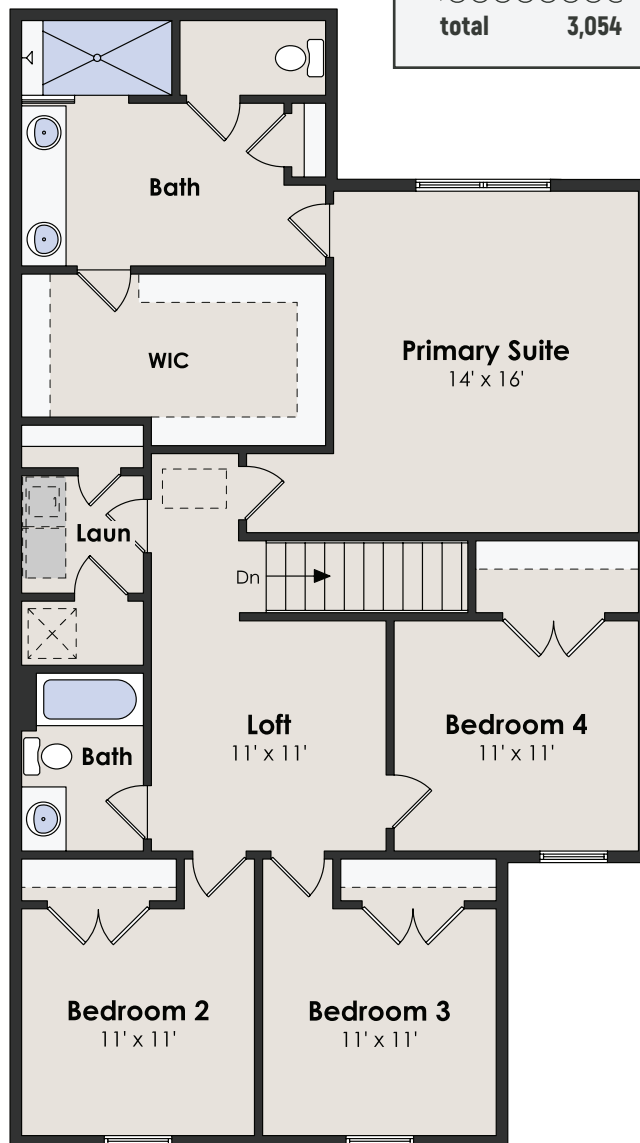
## SQUARE FOOTAGE

1st floor	1,043
2nd floor	1,394
<b>total a/c</b>	<b>2,402</b>
lanai	117
garage	491
entry	44
<b>total</b>	<b>3,054</b>

5 beds + loft · 3 baths · 2-car garage · 2,402 sf a/c



FIRST FLOOR



SECOND FLOOR

Creekside Run

855.44.MYCAH  
ChristopherAlanHomes.com

CHRISTOPHER ALAN HOMES

Features, amenities, equipment, materials, floor plans, elevations, colors, and designs vary and are subject to changes or substitution without notice. Items shown are artist's renderings and may contain options that are not standard on all models or not included in the purchase price. Availability and pricing may vary and are subject to change without notice. Square footage/acreage/dimensions are estimated; actual square footage/acreage/dimensions may differ. Garage/bay sizes may vary from home to home and may not accommodate all vehicles. Purchasers should refer to the applicable purchase and sale agreement for final terms and conditions. © Christopher Alan Homes #CGC1532837. Christopher Alan Realty LLC #CQ1055390. 06/23.

